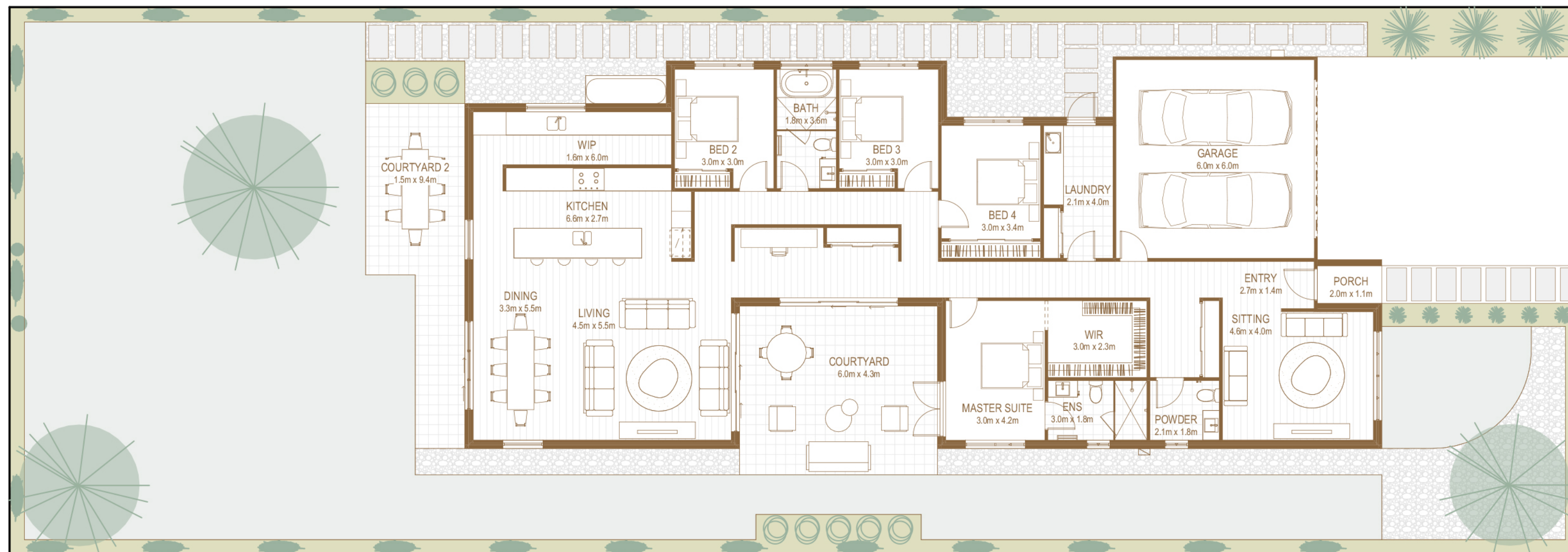




The Lumen

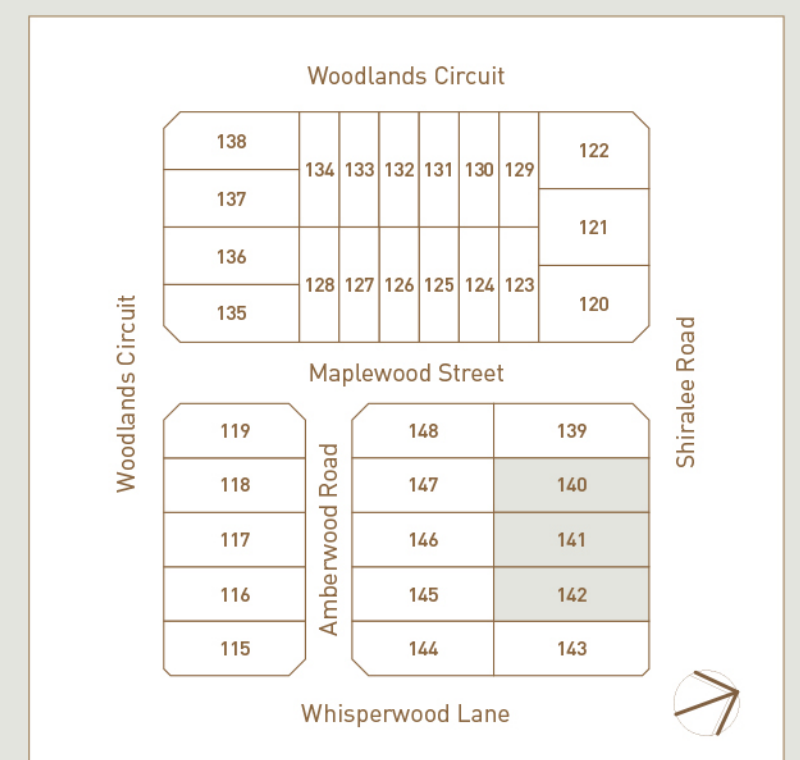
140 / 141 / 142



Bedroom	4
Bathroom	2.5
Garage	2
Internal area	232m ²
Double garage	37m ²
Courtyard	50m ²
External yard	451m ²
Land size	786m ²

EACH RESIDENCE FEATURES

- Large open-plan living, dining & kitchen area.
- Butler's pantry.
- Courtyard indoor / outdoor entertaining area.
- Secondary central courtyard for solar access.
- Separate living room / media room.
- Master suite with walk-in robe & ensuite.
- 2 car garage with driveway for additional parking.



Disclaimer: This plan is a guide only and does not constitute an offer or contract. Please note changes may be made during the development and areas, fittings, fixtures, and specifications are subject to change without notice in accordance with the terms of the contract of sale.

All parties must rely on their own investigation to validate this information as it is not guaranteed. No liability will be accepted for any inaccuracy or misstatement. All CGI images are Artists Impressions.